

LATVIA

Report by

Janis Garjans, Division of Museums of Ministry of Culture of Latvia

Introduction – Key issues

Gathering of statistics in Latvia is determined by the Law of Statistics. Its implementation is regulated by Regulations issued by the Cabinet of Ministers (Cabinet regulations No. 1074 “Regulations on Gathering National Statistics on Culture”). “The Latvian Digital Map of Culture” (LDMC) www.kulturaskarte.lv serves as a mechanism for gathering statistics of national culture and a source of information, including museums.

Definition of museum

Latvia's *Law on Museums* includes the following definition of museum:

“A museum is an educational and research institution available to the public, the task which is to collect, preserve and communicate natural, tangible and intangible cultural values in the society pursuant to the specificity of operation of the museum, as well as to promote usage thereof for education and development of the society.” (*The Law on Museums*. Section 7 (1))

Existence of museum-related laws

The Law on Museums was passed by the Saeima (Parliament of the Republic of Latvia) on 18 June 1997, the last edition adopted in 1 January 2010. The *Law on Museums* outlines the relationship between the state and community in the field of museums. The Law determines also the structure of the Latvian museum system and its sources of funding.

To ensure museum work that is of high quality, professional and relevant to society, the Law on Museums requires periodic **accreditation** for state and local authority museums. Accreditation is a prerequisite for private museums to receive state funding. Museum accreditation is prescribed in the Regulations Regarding Accreditation of Museums (2006) issued by the Cabinet. The accreditation of museums began in January 1999.

All of the cultural historical valuables held in national and local authority museums make a combined form of the **National Museum Holdings**, which is the wealth of the nation and is under the protection of the state. Management of the Holdings is regulated by the Cabinet Regulations Regarding the National Holdings of Museums (2006).

The Law on Museums ensures the professionalism and democracy of the branch authority through the public advisory body, the **Latvian Museums Council**. Museums as well as community representatives are represented in the Council. The Council offers opinions about the most vital issues related to the field: politics, the National Museum Holdings, museum accreditation, funding and other issues.

Categories used regarding Type of Collection

Museums and their collections have been classified in several ways.

1. In order to classify museums the LDMC has created eight groups, allowing tagging multiple choice. According to LDMC classification there are following museum groups in Latvia:

- Museums of history and archaeology – 71
- Specialized museums (including museums devoted to personalities and memory sites) – 58
- Regional museums – 37
- Art museums – 27
- Museums of ethnography and anthropology – 19
- Science and technology museums – 4
- General museums – 3
- Natural history and natural science museums – 2

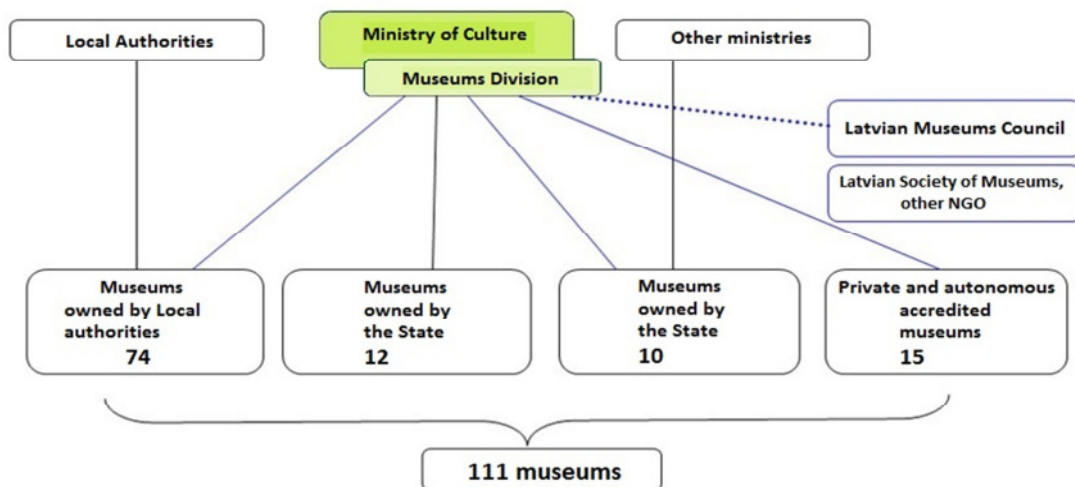
2. The National Museum Holdings Joint Catalogue which includes information about state and local authority museum collections provides a classification system for museum collections. Museum's collections are classified into four main groups:

- Group of three-dimensional objects with 33 subtypes;
- Group of written objects with 6 subtypes;
- Group of audiovisual objects and IT objects (without subtypes)
- Group of natural objects (without subtypes)

Categories used regarding type of ownership

The *Law on Museums* classifies Latvian museums according to their type of ownership.

Structure of museums sector in Latvia (2013)



State funded museums receive funding from the state budget and operate under the jurisdiction of Ministries (as of December 2013): Ministry of Culture – 12; other ministries – 10 (including: Ministry of Health – 4; Ministry of Education and Science – 1; Ministry of the Interior – 1; Ministry of Agriculture – 2; Ministry of Defence – 1; Ministry of Environmental Protection – 1). The largest portion of state museums is affiliated with the Ministry of Culture, mainly cultural history and art museums. The other state museums are related through their content to a specific theme and are administered by the corresponding ministry, in this way ensuring the opportunity to respond to the needs of the groups of people most interested in the work of the museums, and in order to implement the principle of decentralization of institutions. The Ministry of Culture is responsible for the operation of the decentralised museum system, through overseeing and coordinating all museums.

Local authority museums operate at various levels of local government (region, regional city, area) and are dependent on finances from the budgets of governing bodies of region, city or area. These museums have a local history specialization, although they often also include an art gallery component.

Private and autonomous museums forms an important part of the Latvian museum sector. Their approximate number is 200 museums. Statistical data on this group of museums is being collected if the museum has acquired the status of a nationally recognized museum, i.e., has been accredited. As at 31 December 2014 there were 15 accredited private and autonomous museums.

Existing Data – Basic Figures and Diagrams

LDMC comprises the following information on museums (public data is underlined):

- 1) Basic information (address, legal status, mission, accreditation)
- 2) Working hours
- 3) Offer (free of charge and paid services)
- 4) Documentation (normative documentation)
- 5) Collections (amount, accession during the reporting period, purchases, removal from the collections, financial assessment, digital inventory of the collections, usage of the collections)
- 6) Scientific work (papers, monographs, catalogues, guides, exhibition plans, out of them published)
- 7) Communication (number of visits, number of temporary/permanent exhibitions, number of guided tours, number of educational programs, international collaboration, home page)
- 8) Infrastructure (buildings, territory)
- 9) Information technology (number and usage of computers)
- 10) Staff
- 11) Financial indices
- 12) Multimedia

Table 1: Museums in Latvia, 2002-2013

	2005	2007	2010	2011	2013
Number of museums	131	128	141	141	144
owned by state	36	36	40	40	40
owned by local authorities	88	83	87	87	89
autonomous museums	-	-	8	8	8
private museums	7	9	6	6	7
museums with free entrance	5	5	21	23	24
Personnel	1.987	2.115	1.788	1.820	1.810
museum specialists	846	919	917	862	871
museum specialists (%)	42,6 %	43,5 %	51,3 %	47,4 %	48,1 %
Collections (number of museum objects)	5.260.993	5.438.502	5.766.741	5.845.138	5.998.646
number of museum objects digitised for Joint Catalogue of Museum Holdings	-	-	547.948	646.038	665.565
museum objects digitised for Joint Catalogue of Museum Holdings (%)	-	-	9,5 %	11,0 %	11,1 %
Temporary exhibitions	1.040	1.017	1.043	1.112	1.105
Educational activities	2.942	4.698	4.646	6.015	6.898
Number of visits	2.073.959	2.398.658	2372.247	2535.878	2608.526
free visits (%)	-	-	43,7 %	40,0 %	38,5 %
foreigners (in groups only)	192.107	194.125	152.495	181.096	219.246
foreigners (in groups only, %)	9,3 %	8,1 %	6,4 %	7,1 %	8,4 %
pupils (in groups only)	355.312	322.075	266.344	269.099	264.088
pupils (in groups only, %)	17,1 %	13,4 %	11,2 %	10,6 %	10,1 %
Incomes of museums (total, in EUR)	15.095.311	33.710.333	21.954.241	24.834.639	27.680.709
of wich entry fees (EUR)	1.473.303	1.867.030	2.087.159	2.685.293	2.881.300
of wich entry fees (%)	9,8 %	5,5 %	9,5 %	10,8 %	10,4 %

	2005	2007	2010	2011	2013
Expenditures of museums (total, in EUR)	14.641.619	28.866.523	21.208.423	24.559.281	30.508.966
of wich labour cost (EUR)	5.998.563	13.190.513	12.078.569	13.673.540	14.577.931
of wich labour cost (%)	41,0 %	45,7 %	56,9 %	55,6 %	47,8 %
of wich acquisition cost	267.236	389.219	169.296	328.006	360.890
of wich acquisition cost (%)	1,8 %	1,3 %	0,8 %	1,3 %	1,2 %

Chart 1: Number of visits in accredited museums (in thousands) 2000 - 2013

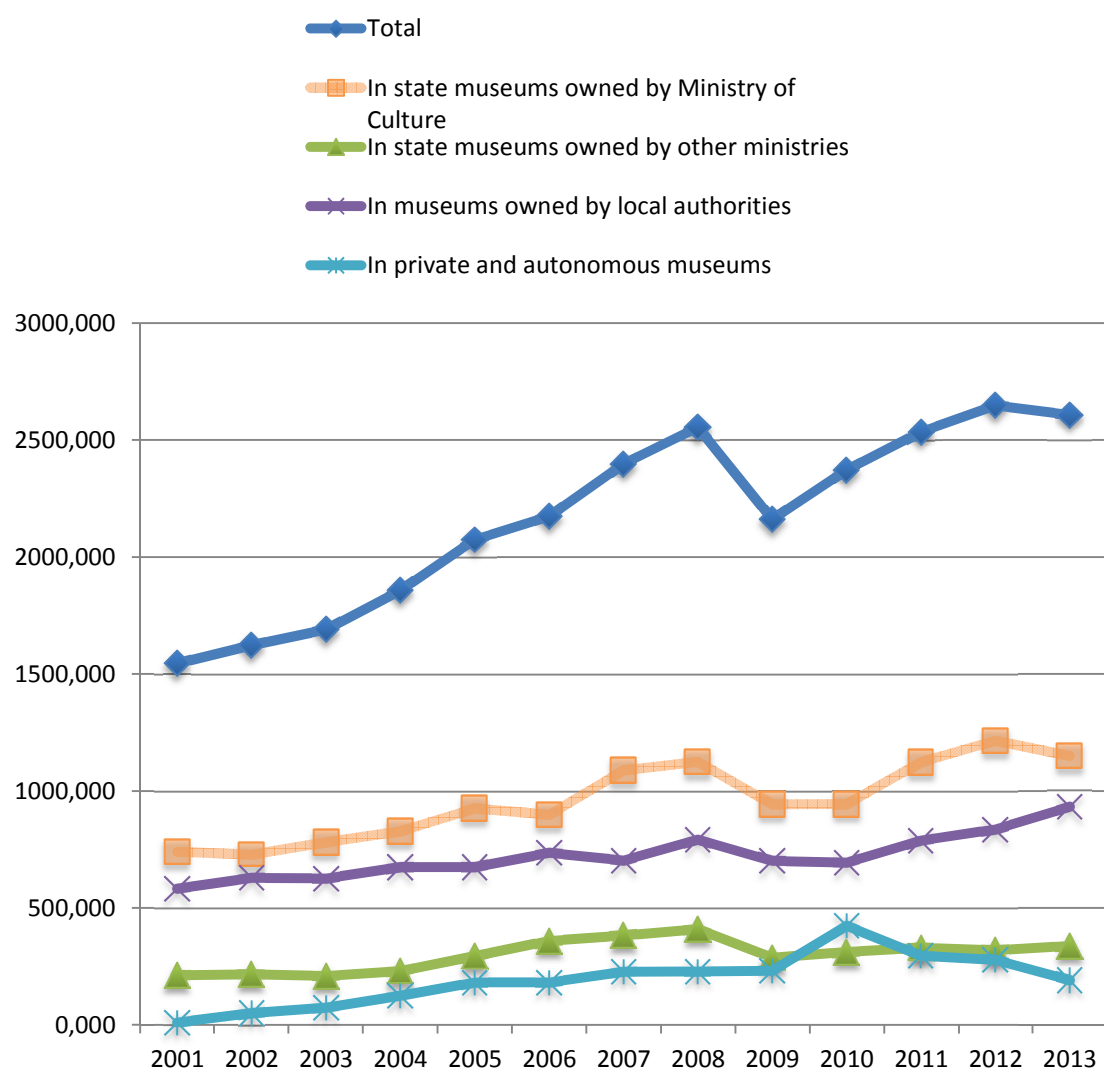


Chart 2: Proportion of visits of foreigners (in groups only) vs. total number of visits

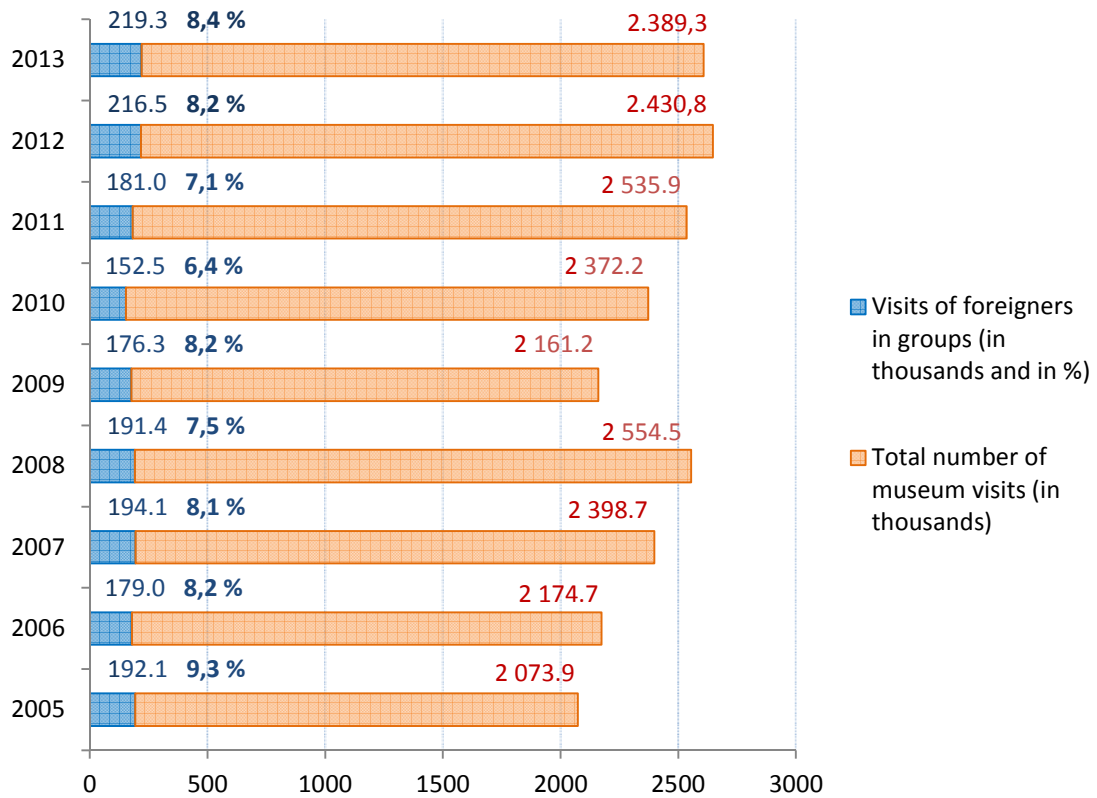


Chart 3: Proportions of attendance of foreigners (in groups only) in museums of different ownership (in thousands)

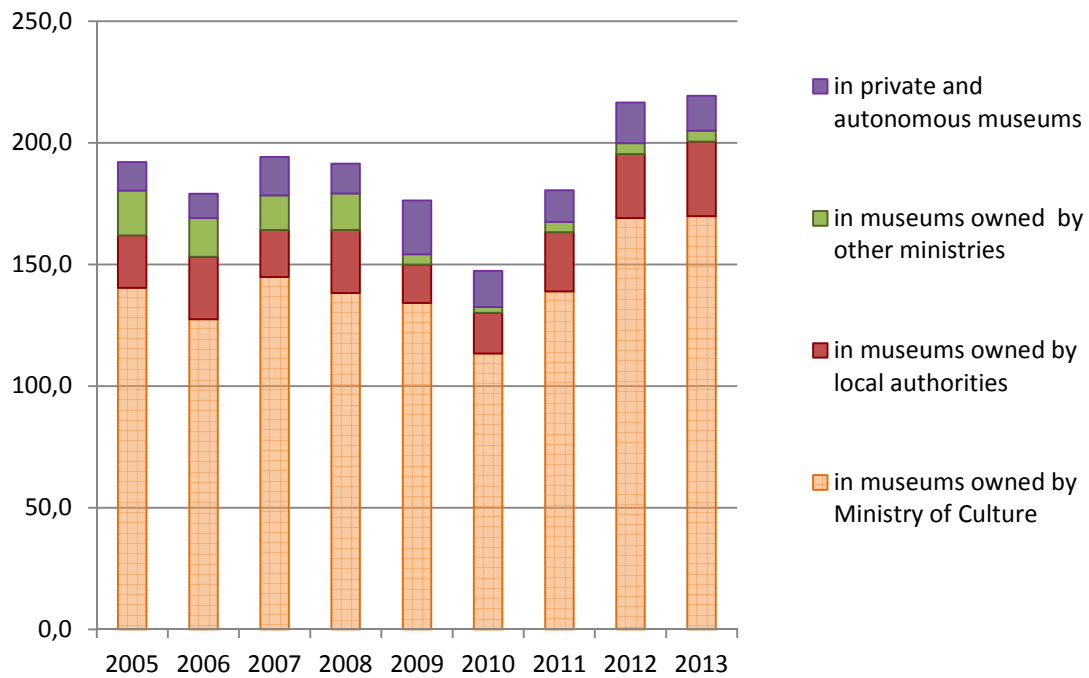


Chart 4: Total number of visits (in thousands) and a proportion of free entries (in %)

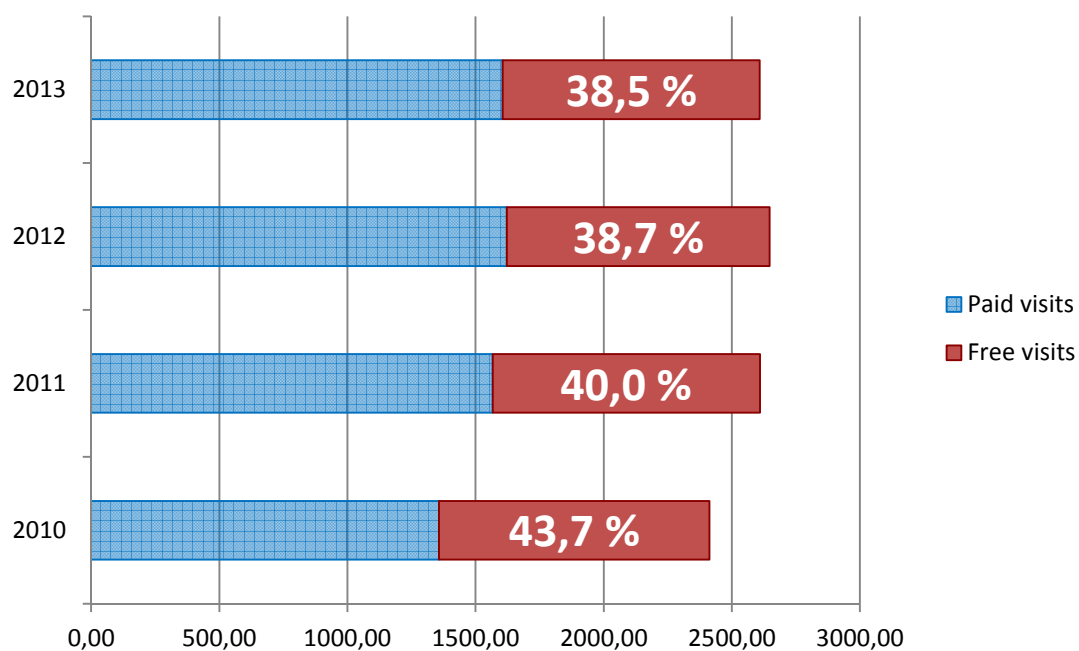


Chart 5: Amount of museum visits apart from **Museum Night** entries

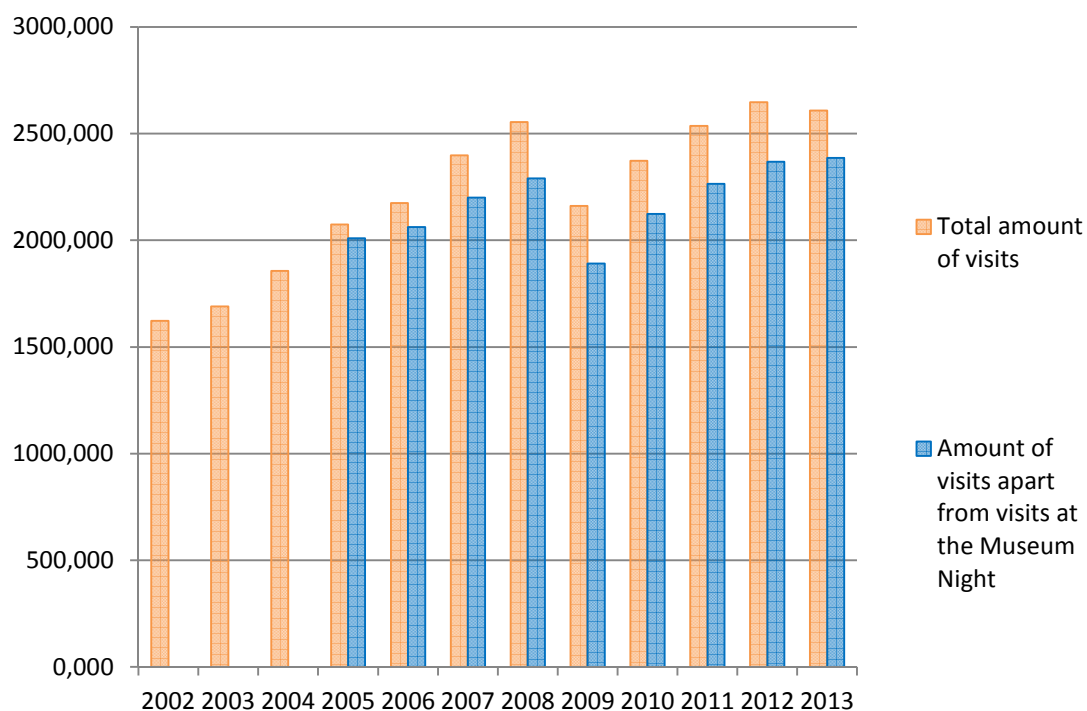


Chart 6: Comparison of amount of **temporary exhibitions** in Latvian museums 2001-2013

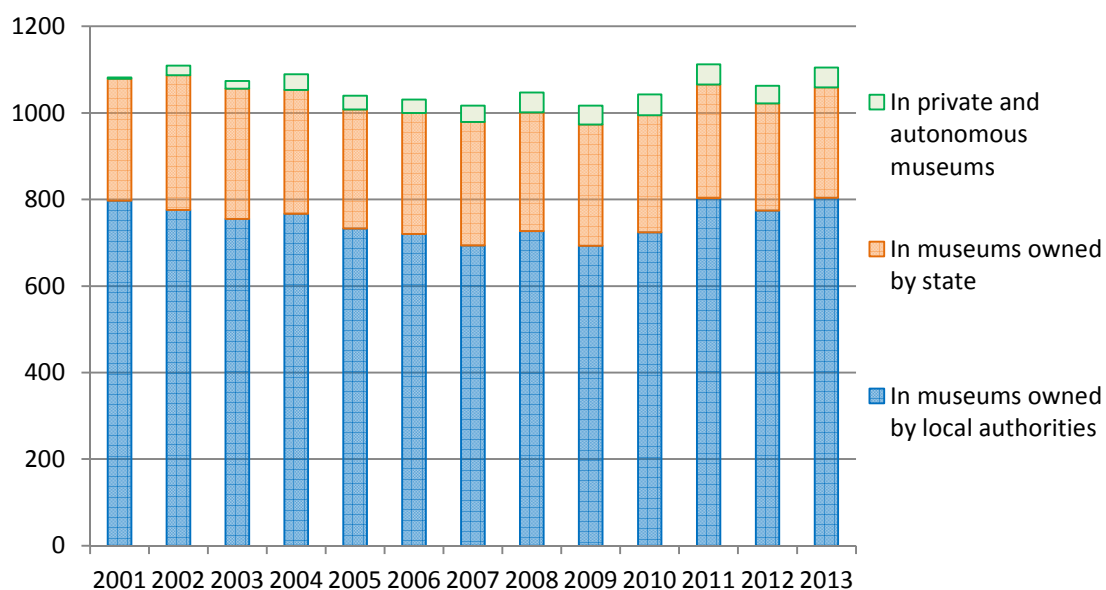
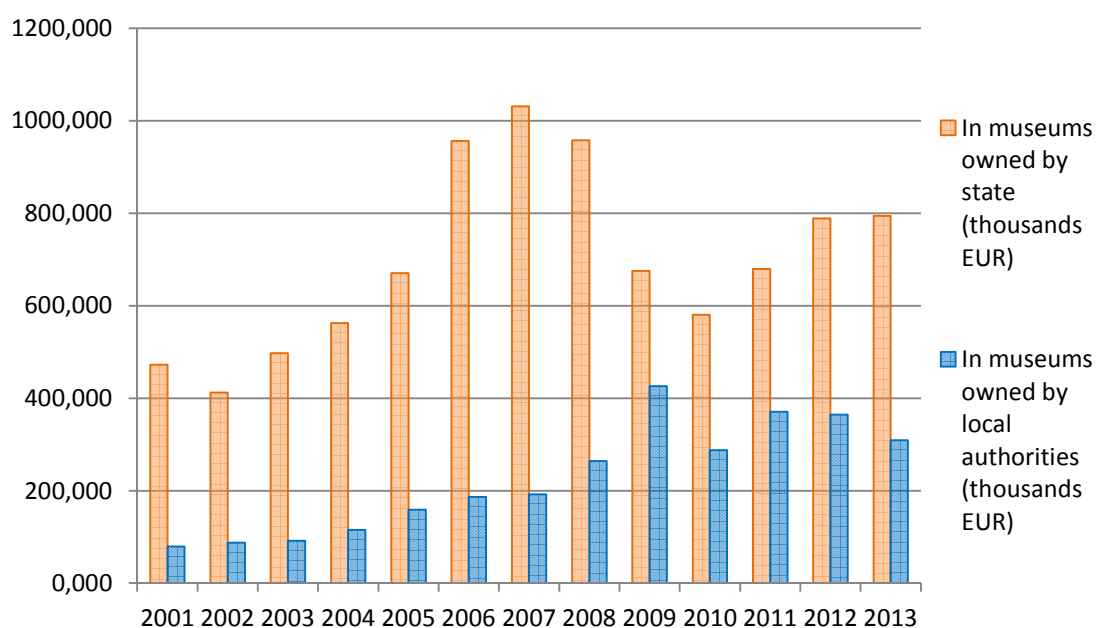


Chart 7: Comparison of incomes from **paid services (except entry fees)** in museums owned by state and by local authorities 2001-2013



List of References

State Authority on Museums

The Latvian Digital Map of Culture (LDMC) www.kulturaskarte.lv (from 2009)